

Detention data

Once a police officer takes a youth into custody, he or she considers the need for placement in a **detention** facility, based on flight risk and whether the youth is a danger to himself or the community. If detention seems appropriate, the officer will contact the agency responsible for formal detention screening (typically a probation department or detention center) and request detention screening. If the officer decides not to request detention, the youth is released to a parent or guardian.

With detention screening, it is the screener's responsibility to determine whether the youth requires detainment. A **detention screening instrument** is used in nearly all Illinois jurisdictions. The Administrative Office of the Illinois Courts is developing and piloting a new screening instrument. See Appendix E for a copy of the detention screening instrument being used across Illinois.

Detention decisions are made based on a final screening score. Points are assigned based on the severity of the current offense, the youth's prior involvement with the juvenile justice system, whether or not the youth has missed previous court dates, and the youth's legal status. For most instruments in use in Illinois, if a youth scores 12 or more points, he or she is detained. If a youth scores seven to 11 points, the screener may release the youth, but apply a less restrictive or **non-secure custody** option, such as **home detention**. If a youth scores less than six points, he or she is released to a parent or guardian.

A detention screener may ask a supervisor for permission to override the score when aggravating or mitigating factors not found on the instrument are considered. For example, a youth arrested during a domestic dispute may not score enough to warrant detention, but the screener may request an override to keep the youth from returning to his or her home environment.

A **detention hearing** must be held within 40 hours of detainment. Once there is probable cause to believe the minor is delinquent, a continuation of detention can be based on any of the following: (1) secure custody is of immediate and urgent necessity for the minor's protection or the protection of another person or his or her property; (2) the minor is likely to flee the jurisdiction of the court; or (3) the minor was arrested under a **warrant** (705 *ILCS* 405/5-501). Only youth 10 years of age or older can be held in a youth detention center. See Appendix D for a map of all Illinois detention centers operating in 2005.

Most **admissions** to youth detention centers are of youth who have been accused of committing delinquent acts but have not yet been adjudicated delinquent. The detainment of youth accused of delinquent acts but who have not yet had a trial is referred to as **pre-trial detention**.

Youth detention centers also are used for short periods of detention as part of a sentence. The detainment of youth following trial is referred to as a **post-trial detention**. Youth found delinquent can be ordered to serve up to 30 days in a county detention center, which includes time served prior to sentencing.

Data summary

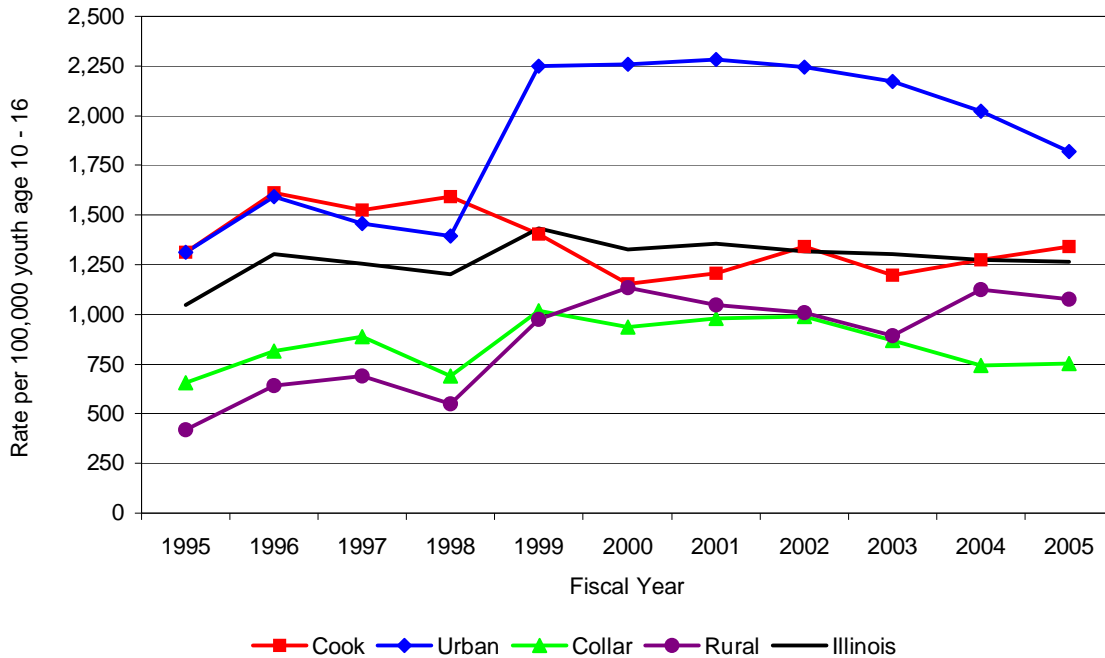
Data collected for the Administrative Office of the Illinois Courts Annual Report to the Illinois Supreme Court and from the **Juvenile Monitoring Information System (JMIS)** were used to examine admissions to Illinois youth detention centers from 2000 to 2005.

JMIS is a web-based management information system that allows all Illinois juvenile detention centers to electronically submit data and run data reports. The 2005 data extracted from JMIS can be separated by age, gender, race, and offense type for each admission. Most detention centers reported in 2005 to JMIS the number of admissions and the characteristics of the youth admitted. Although the Cook County Juvenile Temporary Detention Center did not report to JMIS in 2005, they provided the Authority with detention data for 2005. The Cook County Juvenile Temporary Detention Center began JMIS data entry in 2006.

Detention offense categories used were based on the Illinois Compiled Statutes and are detailed in Appendix F. The JMIS system makes a distinction for juveniles admitted to detention for a warrant. Warrants can be issued for any type of crime. A warrant offense designation in the JMIS system indicates that the juvenile was admitted on the basis of an outstanding warrant, rather than the offense for which the warrant was issued.

In 2005, there were 16,284 admissions to secure detention statewide, an 11 percent decrease from the 18,245 admissions in 1995. In 2005 60 percent of detention admissions were black youth, 28 percent were white youth, and 11 percent were Hispanic youth. Most youth admitted to detention were male (83 percent). A total of 26 percent of youth admissions to detention were due to a violent offense, followed by property offenses (23 percent) and warrant offenses (22 percent). Cook County detention admission data by offense category were unavailable.

Figure 16: Rate of admissions to secure detention per 100,000 youth age 10-16 by county classification, CY95 - 2005



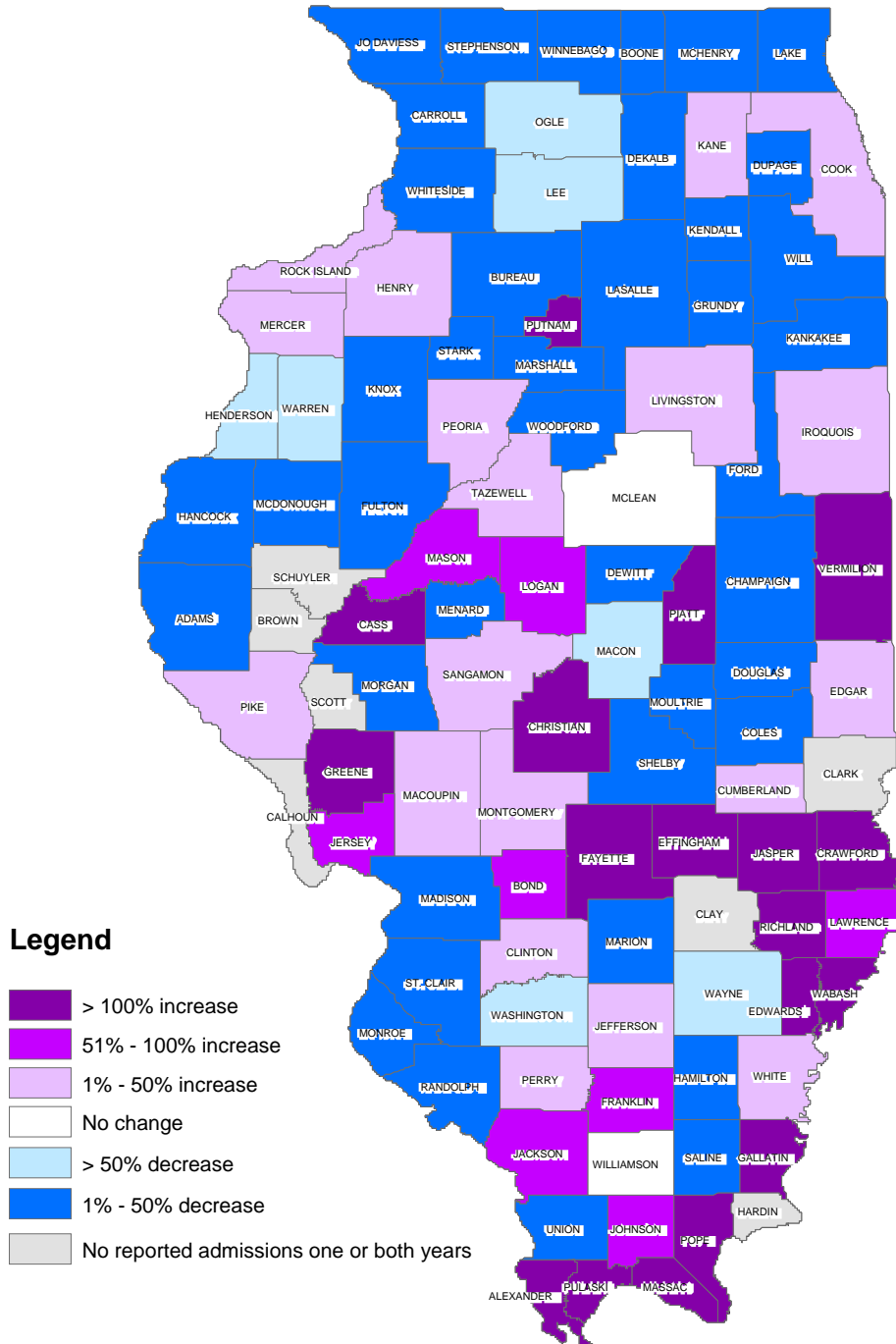
Source: Administrative Office of the Illinois Courts and Juvenile Monitoring Information System

The state rate of annual detention admissions increased slightly in the 10 years examined from 1995 to 2005. In 2005, the rate of detention admissions was 1,267 admissions per 100,000 youth ages 10 to 16. *Figure 16* shows the rate of youth admissions to secure detention by county classification from 1995 to 2005.

Map 4 depicts the percent change in the rate of county level detention center admissions between 2000 and 2005.

In Illinois in 2005, the **average daily population** of youth in detention centers was 970. The **average length of stay** is based on the admission and release dates of youth in detention. The average length of stay of youth in detention was 15 days. For county-level data, refer to the data tables section in Appendix H.

Map 4
Percent change in rate of youth admissions to secure detention in Illinois, 2000- 2005



Source: Juvenile Monitoring Information System and Cook County Juvenile Temporary Detention Center

Appendix H: Data tables section

The following data tables include county-level detail for several dozen juvenile justice data elements. When available, some data elements were also broken down by demographics, such as age, race, and gender. Data is provided by calendar year, academic year, or Fiscal Year, depending upon the reporting agency. Whenever possible, both 2000 and 2005 data were included.

Many caveats have been mentioned throughout this report regarding the interpretation of the following data. The bullet points below describe additional issues that should be considered when reviewing the data tables.

- If there is a blank space where data should be, then data were not available.
- When zero (0) is listed for a particular data element, there are two interpretations
 - There were zero instances of that particular event occurring.
 - Zero instances of that particular event were reported.

For instance: A zero appears for Greene County in the youth arrests table. This could be interpreted as Greene County not having any youth arrests for 2005, or that Greene County did not report any youth arrests to the Illinois State Police, but actually did arrest juveniles.

Whenever possible, rates were calculated by using the population most appropriate to the data element. For example, youth incarceration rates were calculated using the youth population 13-16 since a youth under the age of 13 cannot be incarcerated in an Illinois Youth Center, and youth 17 or older are considered adults in Illinois.

List of tables

Table 29: Number of admissions to secure detention, CY00 – CY05.....	175
Table 30: Number of admissions to secure detention by race, CY05.....	177
Table 31: Number of admissions to secure detention by sex, CY05	179
Table 32: Number of admissions to secure detention by offense category, CY05.....	181
Table 33: Number of admissions to secure detention by age, CY05.....	183
Table 34: Average daily population (ADP) and average length of stay (ALOS) in secure youth detention, CY05.....	185

Table 29: Number of youth admissions to secure detention, CY00 – CY05

Source: Juvenile Monitoring Information System

Rate per 100,000 youth age 10-16

County	2000 Admissions	Rate	2005 Admissions	Rate	Rank
Adams	249	3,534	165	2,542	8
Alexander	7	663	12	1,434	21
Bond	13	834	20	1,361	22
Boone	55	1,097	48	845	52
Brown	1	195	0	0	97
Bureau	64	1,741	36	1,079	38
Calhoun	0	0	2	426	78
Carroll	15	858	12	797	55
Cass	3	226	5	385	82
Champaign	501	3,390	277	1,958	12
Christian	7	200	22	650	66
Clark	0	0	12	701	63
Clay	0	0	9	687	64
Clinton	17	460	18	521	74
Coles	56	1,344	42	1,147	33
Cook	6,087	1,150	7,155	1,342	23
Crawford	5	246	34	1,942	14
Cumberland	8	626	6	531	72
DeKalb	148	1,835	115	1,375	1
DeWitt	21	1,260	18	1,136	91
Douglas	7	308	6	301	87
DuPage	781	828	476	494	76
Edgar	19	962	19	1,084	37
Edwards	1	153	6	987	42
Effingham	9	224	22	579	70
Fayette	10	461	17	883	48
Ford	8	511	4	285	88
Franklin	22	588	39	1,095	35
Fulton	32	918	27	837	54
Gallatin	1	176	2	358	83
Greene	1	63	6	418	80
Grundy	35	843	31	715	62
Hamilton	3	354	2	266	89
Hancock	20	948	17	904	47
Hardin	0	0	5	1,471	20
Henderson	3	373	1	145	93
Henry	41	744	37	742	60
Iroquois	31	903	29	950	44
Jackson	26	568	34	840	53
Jasper	2	171	4	422	79
Jefferson	149	3,620	138	3,590	3
Jersey	14	586	21	981	43
JoDaviess	6	276	4	198	92
Johnson	7	722	11	1,162	32
Kane	606	1,318	828	1,541	18
Kankakee	172	1,539	140	1,238	29
Kendall	65	1,029	64	774	57
Knox	159	3,178	89	1,944	13
Lake	675	944	466	580	69
LaSalle	225	1,930	141	1,292	27
Lawrence	2	139	3	222	90
Lee	65	1,716	22	633	67

Table 29: Number of youth admissions to secure detention, CY00 – CY05

County	2000 Admissions	Rate	2005 Admissions	Rate	Rank
Livingston	66	1,550	66	1,753	16
Logan	58	2,024	82	3,222	5
McDonough	18	761	14	669	65
McHenry	145	476	111	319	85
McLean	182	1,338	179	1,278	28
Macon	495	4,360	138	1,300	25
Macoupin	33	634	41	870	49
Madison	665	2,510	379	1,498	19
Marion	91	2,112	42	1,059	40
Marshall	8	641	5	387	81
Mason	7	427	12	773	58
Massac	7	525	14	1,061	39
Menard	9	628	7	523	73
Mercer	20	1,096	21	1,293	26
Monroe	7	224	4	130	96
Montgomery	34	1,121	31	1,088	36
Morgan	33	929	23	725	61
Moultrie	28	1,823	12	861	50
Ogle	95	1,593	40	669	65
Peoria	631	3,552	829	4,713	2
Perry	22	1,040	24	1,203	31
Piatt	3	176	8	499	75
Pike	8	457	9	573	71
Pope	3	767	1	308	86
Pulaski	13	1,471	23	3,091	6
Putnam	2	302	8	1,329	24
Randolph	7	220	6	215	91
Richland	9	539	31	2,092	11
Rock Island	158	1,110	147	1,126	34
St. Clair	781	2,673	590	2,121	10
Saline	45	1,670	21	856	51
Sangamon	311	1,638	313	1,694	17
Schuyler	0	0	3	488	77
Scott	3	526	0	0	97
Shelby	2	83	3	133	94
Stark	4	614	2	339	84
Stephenson	79	1,525	48	1,021	41
Tazewell	144	1,129	146	1,211	30
Union	20	1,106	16	945	45
Vermilion	72	875	177	2,239	9
Wabash	5	378	22	1,887	15
Warren	44	2,372	12	783	56
Washington	16	932	2	132	95
Wayne	14	820	2	133	94
White	33	2,285	37	2,967	7
Whiteside	68	1,101	43	743	59
Will	573	995	657	913	46
Williamson	34	599	32	584	68
Winnebago	1,365	4,693	964	3,225	4
Woodford	23	583	20	523	73
DOC	51		44		
Out-of-State	35		104		
Total	17,033	1,348	16,284	1,267	

Table 30: Number of youth admissions to secure detention by race and ethnicity, CY05

Source: Juvenile Monitoring Information System and Cook County Detention Center

Age 10-16

County	Black	Asian	Native American	White	Multiracial	Hispanic	Other	Total
Adams	35	0	0	126	4	0	0	165
Alexander	9	0	0	3	0	0	0	12
Bond	2	0	0	18	0	0	0	20
Boone	1	0	0	39	0	8	0	48
Brown	0	0	0	0	0	0	0	0
Bureau	3	0	0	27	1	5	0	36
Calhoun	0	0	0	2	0	0	0	2
Carroll	3	0	0	8	0	1	0	12
Cass	1	0	0	4	0	0	0	5
Champaign	218	1	0	53	0	5	0	277
Christian	5	0	0	17	0	0	0	22
Clark	0	0	0	12	0	0	0	12
Clay	0	0	0	9	0	0	0	9
Clinton	0	0	0	17	1	0	0	18
Coles	6	0	0	35	1	0	0	42
Cook	5,949	19	3	271	0	904	9	7155
Crawford	5	0	0	29	0	0	0	34
Cumberland	0	0	0	6	0	0	0	6
DeKalb	7	0	0	80	10	18	0	115
DeWitt	0	1	0	13	0	4	0	18
Douglas	0	0	0	6	0	0	0	6
DuPage	154	4	0	219	9	86	4	476
Edgar	0	0	0	19	0	0	0	19
Edwards	0	0	0	6	0	0	0	6
Effingham	0	0	0	22	0	0	0	22
Fayette	0	0	0	17	0	0	0	17
Ford	0	0	0	3	0	1	0	4
Franklin	2	0	0	37	0	0	0	39
Fulton	0	0	0	27	0	0	0	27
Gallatin	0	0	0	2	0	0	0	2
Greene	0	0	0	6	0	0	0	6
Grundy	3	0	0	25	0	2	1	31
Hamilton	0	0	0	2	0	0	0	2
Hancock	0	0	0	17	0	0	0	17
Hardin	0	0	0	5	0	0	0	5
Henderson	0	0	0	1	0	0	0	1
Henry	7	0	0	26	1	3	0	37
Iroquois	4	0	0	23	0	2	0	29
Jackson	27	0	0	5	1	1	0	34
Jasper	0	0	0	4	0	0	0	4
Jefferson	55	1	0	71	6	5	0	138
Jersey	0	0	0	21	0	0	0	21
JoDaviess	0	0	0	4	0	0	0	4
Johnson	0	0	0	11	0	0	0	11
Kane	207	3	3	255	59	298	3	828
Kankakee	95	0	0	36	2	4	3	140
Kendall	1	0	0	43	6	11	3	64
Knox	41	0	0	45	1	0	2	89
Lake	197	1	0	166	0	100	2	466
LaSalle	7	0	0	121	0	13	0	141
Lawrence	0	0	0	3	0	0	0	3
Lee	4	0	0	17	0	1	0	22

Table 30: Number of youth admissions to secure detention by race and ethnicity, CY05

County	Black	Asian	Native American	White	Multiracial	Hispanic	Other	Total
Livingston	11	0	0	55	0	0	0	66
Logan	8	0	0	69	5	0	0	82
McDonough	0	0	0	14	0	0	0	14
McHenry	3	0	0	75	8	24	1	111
McLean	99	0	0	67	7	6	0	179
Macon	108	0	0	28	1	0	1	138
Macoupin	0	0	1	40	0	0	0	41
Madison	115	2	0	247	10	4	1	379
Marion	9	0	0	33	0	0	0	42
Marshall	0	0	0	5	0	0	0	5
Mason	0	0	0	12	0	0	0	12
Massac	6	0	0	8	0	0	0	14
Menard	1	0	0	6	0	0	0	7
Mercer	0	0	0	21	0	0	0	21
Monroe	1	0	0	3	0	0	0	4
Montgomery	0	0	0	31	0	0	0	31
Morgan	12	0	0	9	2	0	0	23
Moultrie	0	0	0	12	0	0	0	12
Ogle	1	0	0	36	0	3	0	40
Peoria	647	1	0	172	2	7	0	829
Perry	0	0	0	24	0	0	0	24
Piatt	0	0	0	8	0	0	0	8
Pike	0	0	0	9	0	0	0	9
Pope	0	0	0	1	0	0	0	1
Pulaski	14	0	0	9	0	0	0	23
Putnam	0	0	0	8	0	0	0	8
Randolph	1	0	0	4	0	0	1	6
Richland	0	0	0	31	0	0	0	31
Rock Island	69	0	0	51	8	19	0	147
St. Clair	384	0	0	197	4	5	0	590
Saline	1	0	0	20	0	0	0	21
Sangamon	184	0	0	124	0	0	5	313
Schuyler	0	0	0	3	0	0	0	3
Scott	0	0	0	0	0	0	0	0
Shelby	3	0	0	0	0	0	0	3
Stark	0	0	0	2	0	0	0	2
Stephenson	36	0	0	12	0	0	0	48
Tazewell	13	2	0	127	0	4	0	146
Union	1	0	0	15	0	0	0	16
Vermilion	74	0	0	88	4	11	0	177
Wabash	0	0	0	22	0	0	0	22
Warren	3	0	0	8	1	0	0	12
Washington	0	0	0	2	0	0	0	2
Wayne	0	0	0	2	0	0	0	2
White	2	0	0	33	2	0	0	37
Whiteside	2	0	0	35	1	5	0	43
Will	300	0	0	200	31	109	17	657
Williamson	8	0	0	24	0	0	0	32
Winnebago	545	2	1	339	2	75	0	964
Woodford	0	0	0	20	0	0	0	20
DOC	14	0	0	25	0	5	0	44
Out-of-State	17	0	0	84	0	3	0	104
Total	9,740	37	8	4,504	190	1,752	53	16,284

Table 31: Number of youth admissions to secure detention by sex, CY05

Source: Juvenile Monitoring Information System and Cook County Detention Center

Age 10-16

County	Female	Percent Female	Male	Percent Male	Total
Adams	47	28.48%	118	71.52%	165
Alexander	4	33.33%	8	66.67%	12
Bond	4	20.00%	16	80.00%	20
Boone	7	14.58%	41	85.42%	48
Brown	0	0.00%	0	0.00%	0
Bureau	8	22.22%	28	77.78%	36
Calhoun	0	0.00%	2	100.00%	2
Carroll	2	16.67%	10	83.33%	12
Cass	0	0.00%	5	100.00%	5
Champaign	48	17.33%	229	82.67%	277
Christian	3	13.64%	19	86.36%	22
Clark	4	33.33%	8	66.67%	12
Clay	3	33.33%	6	66.67%	9
Clinton	2	11.11%	16	88.89%	18
Coles	8	19.05%	34	80.95%	42
Cook	807	11.28%	6,348	88.72%	7,155
Crawford	11	32.35%	23	67.65%	34
Cumberland	1	16.67%	5	83.33%	6
DeKalb	34	29.57%	81	70.43%	115
DeWitt	1	5.56%	17	94.44%	18
Douglas	0	0.00%	6	100.00%	6
DuPage	108	22.69%	368	77.31%	476
Edgar	5	26.32%	14	73.68%	19
Edwards	0	0.00%	6	100.00%	6
Effingham	2	9.09%	20	90.91%	22
Fayette	3	17.65%	14	82.35%	17
Ford	2	50.00%	2	50.00%	4
Franklin	1	2.56%	38	97.44%	39
Fulton	2	7.41%	25	92.59%	27
Gallatin	0	0.00%	2	100.00%	2
Greene	0	0.00%	6	100.00%	6
Grundy	4	12.90%	27	87.10%	31
Hamilton	0	0.00%	2	100.00%	2
Hancock	3	17.65%	14	82.35%	17
Hardin	0	0.00%	5	100.00%	5
Henderson	0	0.00%	1	100.00%	1
Henry	7	18.92%	30	81.08%	37
Iroquois	4	13.79%	25	86.21%	29
Jackson	11	32.35%	23	67.65%	34
Jasper	0	0.00%	4	100.00%	4
Jefferson	12	8.70%	126	91.30%	138
Jersey	5	23.81%	16	76.19%	21
JoDaviess	0	0.00%	4	100.00%	4
Johnson	4	36.36%	7	63.64%	11
Kane	186	22.46%	642	77.54%	828
Kankakee	27	19.29%	113	80.71%	140
Kendall	14	21.88%	50	78.13%	64
Knox	10	11.24%	79	88.76%	89
Lake	35	24.82%	106	75.18%	141
LaSalle	94	20.17%	372	79.83%	466
Lawrence	0	0.00%	3	100.00%	3
Lee	2	9.09%	20	90.91%	22

Table 31: Number of youth admissions to secure detention by sex, CY05

County	Female	% Female	Male	% Male	Total
Livingston	25	37.88%	41	62.12%	66
Logan	29	35.37%	53	64.63%	82
McDonough	2	14.29%	12	85.71%	14
McHenry	22	19.82%	89	80.18%	111
McLean	51	28.49%	128	71.51%	179
Macon	32	23.19%	106	76.81%	138
Macoupin	4	9.76%	37	90.24%	41
Madison	101	26.65%	278	73.35%	379
Marion	17	40.48%	25	59.52%	42
Marshall	2	40.00%	3	60.00%	5
Mason	6	50.00%	6	50.00%	12
Massac	7	50.00%	7	50.00%	14
Menard	3	42.86%	4	57.14%	7
Mercer	4	19.05%	17	80.95%	21
Monroe	0	0.00%	4	100.00%	4
Montgomery	6	19.35%	25	80.65%	31
Morgan	5	21.74%	18	78.26%	23
Moultrie	2	16.67%	10	83.33%	12
Ogle	7	17.50%	33	82.50%	40
Peoria	183	22.07%	646	77.93%	829
Perry	3	12.50%	21	87.50%	24
Piatt	2	25.00%	6	75.00%	8
Pike	1	11.11%	8	88.89%	9
Pope	0	0.00%	1	100.00%	1
Pulaski	2	8.70%	21	91.30%	23
Putnam	0	0.00%	8	100.00%	8
Randolph	1	16.67%	5	83.33%	6
Richland	9	29.03%	22	70.97%	31
Rock Island	43	29.25%	104	70.75%	147
St. Clair	129	21.86%	461	78.14%	590
Saline	1	4.76%	20	95.24%	21
Sangamon	62	19.81%	251	80.19%	313
Schuyler	0	0.00%	3	100.00%	3
Scott	0	0.00%	0	0.00%	0
Shelby	0	0.00%	3	100.00%	3
Stark	0	0.00%	2	100.00%	2
Stephenson	12	25.00%	36	75.00%	48
Tazewell	35	23.97%	111	76.03%	146
Union	6	37.50%	10	62.50%	16
Vermilion	38	21.47%	139	78.53%	177
Wabash	5	22.73%	17	77.27%	22
Warren	5	41.67%	7	58.33%	12
Washington	0	0.00%	2	100.00%	2
Wayne	0	0.00%	2	100.00%	2
White	10	27.03%	27	72.97%	37
Whiteside	8	18.60%	35	81.40%	43
Will	126	19.18%	531	80.82%	657
Williamson	4	12.50%	28	87.50%	32
Winnebago	220	22.82%	744	77.18%	964
Woodford	3	15.00%	17	85.00%	20
DOC	3	6.82%	41	93.18%	44
Out-of-State	35	33.65%	69	66.35%	104
Total	2,806	17.23%	13,478	82.77%	16,284

Table 32: Number of youth admissions to secure detention by offense category, CY05

Source: Juvenile Monitoring Information System and Cook County Detention Center

*Refers to probation violations, parole violations, and violations of home detention

Age 10-16

County	Person	Property	Sex	Drug	Other	Contempt	Status Offense	Warrant	Violations*	Total
Adams	11	23	2	9	8	30	1	54	27	165
Alexander	0	8	0	0	0	0	0	2	2	12
Bond	1	5	0	0	2	0	0	11	1	20
Boone	15	7	2	3	3	0	0	8	10	48
Brown	0	0	0	0	0	0	0	0	0	0
Bureau	8	5	0	1	3	8	0	7	4	36
Calhoun	1	0	0	0	0	0	0	1	0	2
Carroll	1	5	0	0	0	0	0	5	1	12
Cass	1	2	0	0	0	1	0	1	0	5
Champaign	79	65	3	11	29	24	1	64	1	277
Christian	7	8	1	1	0	0	1	4	0	22
Clark	4	7	0	0	0	0	0	0	1	12
Clay	0	6	1	1	0	0	0	1	0	9
Clinton	4	6	0	1	0	0	0	4	3	18
Coles	6	8	2	2	2	0	0	17	5	42
Cook	Data Unavailable									
Crawford	7	4	0	1	3	3	1	1	14	34
Cumberland	2	2	0	0	0	0	0	1	1	6
DeKalb	28	18	0	6	15	3	1	32	12	115
DeWitt	5	8	0	2	2	0	0	0	1	18
Douglas	5	1	0	0	0	0	0	0	0	6
DuPage	67	46	11	10	28	79	1	168	66	476
Edgar	6	5	0	0	0	0	0	7	1	19
Edwards	0	1	0	2	2	0	0	1	0	6
Effingham	12	2	3	0	0	0	0	2	3	22
Fayette	3	6	0	3	2	0	0	2	1	17
Ford	1	1	0	0	0	2	0	0	0	4
Franklin	1	23	0	0	2	3	0	4	6	39
Fulton	8	4	0	2	3	0	0	9	1	27
Gallatin	0	2	0	0	0	0	0	0	0	2
Greene	1	2	1	0	1	0	0	0	1	6
Grundy	12	0	0	0	1	5	0	12	1	31
Hamilton	0	0	0	0	2	0	0	0	0	2
Hancock	3	11	0	1	0	0	0	1	1	17
Hardin	0	3	0	0	0	0	1	1	0	5
Henderson	0	1	0	0	0	0	0	0	0	1
Henry	7	16	1	1	0	0	0	7	5	37
Iroquois	12	7	1	0	1	0	0	8	0	29
Jackson	5	8	1	1	4	0	1	12	2	34
Jasper	0	1	1	0	0	0	0	0	2	4
Jefferson	18	25	2	14	16	2	2	40	19	138
Jersey	3	4	0	5	1	0	0	4	4	21
JoDaviess	0	1	2	0	1	0	0	0	0	4
Johnson	1	5	0	0	2	0	0	1	2	11
Kane	209	212	6	61	78	16	6	140	100	828
Kankakee	52	22	2	5	5	10	0	26	18	140
Kendall	14	13	2	4	7	1	0	13	10	64
Knox	26	29	2	7	6	0	0	11	8	89
Lake	133	117	18	22	58	0	1	53	64	466
LaSalle	23	21	1	2	6	28	0	59	1	141
Lawrence	1	1	0	0	0	0	0	0	1	3
Lee	5	12	0	0	1	0	0	3	1	22

Table 32: Number of youth admissions to secure detention by offense category, CY05

County	Person	Property	Sex	Drug	Other	Contempt	Status Offense	Warrant	Violations*	Total
Livingston	12	28	1	1	4	9	2	8	1	66
Logan	33	28	0	7	3	3	1	7	0	82
McDonough	5	3	1	1	0	0	0	1	3	14
McHenry	23	29	5	5	11	3	0	22	13	111
McLean	42	46	21	13	9	2	0	46	0	179
Macon	24	42	4	4	5	0	0	59	0	138
Macoupin	10	12	0	5	1	0	1	9	3	41
Madison	126	85	6	8	18	0	0	113	23	379
Marion	11	12	0	3	4	2	1	4	5	42
Marshall	0	4	1	0	0	0	0	0	0	5
Mason	3	3	0	0	1	2	0	1	2	12
Massac	3	7	0	1	1	0	0	1	1	14
Menard	2	0	0	0	0	0	1	4	0	7
Mercer	4	13	0	0	0	0	0	0	4	21
Monroe	2	2	0	0	0	0	0	0	0	4
Montgomery	5	10	0	4	2	0	0	4	6	31
Morgan	8	2	0	1	7	0	0	4	1	23
Moultrie	2	5	1	0	1	0	0	0	3	12
Ogle	8	9	0	1	6	0	0	9	7	40
Peoria	337	203	19	43	69	0	0	149	9	829
Perry	2	10	0	0	0	0	0	10	2	24
Piatt	4	1	0	0	0	0	0	0	3	8
Pike	1	5	0	1	0	0	0	1	1	9
Pope	0	0	0	0	0	0	0	1	0	1
Pulaski	0	11	0	1	3	0	0	5	3	23
Putnam	1	3	0	2	0	0	0	2	0	8
Randolph	1	3	0	0	1	0	0	1	0	6
Richland	8	7	4	0	2	0	0	8	2	31
Rock Island	48	51	4	3	4	2	1	30	4	147
St. Clair	129	169	13	30	48	1	0	166	34	590
Saline	11	7	0	0	0	0	0	1	2	21
Sangamon	114	79	3	15	26	1	0	74	1	313
Schuyler	0	1	1	0	1	0	0	0	0	3
Scott	0	0	0	0	0	0	0	0	0	0
Shelby	1	0	0	0	2	0	0	0	0	3
Stark	1	1	0	0	0	0	0	0	0	2
Stephenson	11	4	0	3	8	0	1	19	2	48
Tazewell	44	42	6	2	12	0	0	19	21	146
Union	5	3	0	1	0	1	0	5	1	16
Vermilion	48	43	6	8	14	1	1	45	11	177
Wabash	1	11	0	0	2	3	0	0	5	22
Warren	3	0	1	0	0	0	0	8	0	12
Washington	0	0	0	0	0	0	0	2	0	2
Wayne	0	0	1	0	1	0	0	0	0	2
White	9	9	0	0	1	1	1	1	15	37
Whiteside	10	10	1	1	3	0	0	12	6	43
Will	183	72	8	14	40	150	0	161	29	657
Williamson	10	10	0	1	1	0	0	7	3	32
Winnebago	194	147	22	56	100	3	1	155	286	964
Woodford	3	3	0	1	0	2	0	10	1	20
DOC	0	1	0	0	29	0	0	14	0	44
Out-of-State	18	24	5	6	9	15	3	14	10	104
Total	2,328	2,059	199	420	743	416	31	2,009	924	9,129

Table 33: Number of youth admissions to secure detention by age, CY05

Source: Juvenile Monitoring Information System and Cook County Detention Center

Per Illinois law, youth over 16 years old are not to be admitted to juvenile detention. Researchers assume most if not all youth falling into those categories are due to data entry errors, not the actual admission to detention of these youth.

County	10	11	12	13	14	15	16	>16*
Adams	0	0	4	14	39	45	57	6
Alexander	1	1	0	3	1	5	0	1
Bond	0	2	2	1	6	7	2	0
Boone	0	0	0	2	6	15	25	0
Brown	0	0	0	0	0	0	0	0
Bureau	0	0	0	0	6	16	14	0
Calhoun	0	0	0	0	0	1	1	0
Carroll	0	0	0	0	2	8	2	0
Cass	0	0	0	0	1	3	1	0
Champaign	1	3	7	31	62	83	87	3
Christian	0	0	0	5	9	3	5	0
Clark	0	0	0	2	3	1	4	2
Clay	0	0	0	0	1	5	3	0
Clinton	0	0	2	2	8	4	2	0
Coles	0	0	4	6	6	12	14	0
Cook	Data Unavailable							
Crawford	0	2	2	2	6	11	10	1
Cumberland	0	0	0	0	0	4	2	0
DeKalb	0	0	3	8	13	38	53	0
DeWitt	0	0	0	1	6	2	9	0
Douglas	0	0	0	0	0	1	5	0
DuPage	0	1	12	22	51	98	162	130
Edgar	0	0	1	1	7	8	2	0
Edwards	0	0	0	0	0	2	4	0
Effingham	0	1	0	4	4	6	7	0
Fayette	0	0	0	1	2	4	10	0
Ford	0	0	0	0	0	1	3	0
Franklin	0	1	0	1	7	20	10	0
Fulton	0	0	1	0	2	10	14	0
Gallatin	0	0	0	0	0	1	1	0
Greene	0	0	0	0	3	1	2	0
Grundy	0	1	0	3	6	11	10	0
Hamilton	0	0	0	0	0	2	0	0
Hancock	0	0	0	3	2	10	2	0
Hardin	0	0	2	0	2	1	0	0
Henderson	0	0	0	0	0	1	0	0
Henry	0	1	0	0	3	22	11	0
Iroquois	0	0	1	0	5	12	10	1
Jackson	0	1	3	0	6	12	12	0
Jasper	0	0	0	0	0	0	4	0
Jefferson	0	0	2	14	26	52	43	1
Jersey	0	0	0	0	2	4	15	0
JoDaviess	0	0	0	1	2	1	0	0
Johnson	0	0	0	0	4	3	3	1
Kane	0	3	10	36	124	215	259	181
Kankakee	0	3	3	7	28	45	54	0
Kendall	0	0	1	3	13	19	28	0
Knox	0	1	2	1	17	31	37	0
Lake	0	3	27	31	96	156	153	0
LaSalle	0	1	5	9	28	45	53	0
Lawrence	0	0	0	0	0	1	2	0
Lee	0	0	0	2	1	11	8	0

Table 33: Number of youth admissions to secure detention by age, CY05

County	10	11	12	13	14	15	16	>16*
Livingston	0	0	1	5	21	16	23	0
Logan	0	0	0	4	23	22	33	0
McDonough	1	0	0	1	3	5	4	0
McHenry	0	0	5	3	12	34	57	0
McLean	0	1	5	12	31	61	69	0
Macon	1	2	1	19	34	51	30	0
Macoupin	0	1	1	2	4	7	26	0
Madison	2	4	12	38	75	111	137	0
Marion	0	0	2	2	6	15	17	0
Marshall	0	0	0	0	1	3	1	0
Mason	0	0	0	3	4	2	2	1
Massac	0	0	0	3	2	5	4	0
Menard	0	0	0	1	2	3	1	0
Mercer	0	0	0	5	11	2	3	0
Monroe	0	0	0	0	0	3	1	0
Montgomery	1	0	0	0	5	15	10	0
Morgan	0	0	1	2	3	8	9	0
Moultrie	0	0	0	0	1	5	6	0
Ogle	0	0	1	1	7	14	17	0
Peoria	3	23	51	100	156	218	278	0
Perry	0	0	3	0	7	8	6	0
Piatt	0	0	0	1	3	2	1	1
Pike	0	0	0	0	1	3	4	1
Pope	0	0	0	0	0	0	0	1
Pulaski	0	0	0	2	5	9	6	1
Putnam	0	0	0	0	0	8	0	0
Randolph	0	0	0	0	0	2	4	0
Richland	0	0	5	0	7	5	12	2
Rock Island	0	0	6	13	33	38	57	0
St. Clair	0	4	14	55	78	186	250	3
Saline	0	0	0	2	8	4	7	0
Sangamon	0	4	11	13	59	122	85	19
Schuyler	0	0	0	1	1	1	0	0
Scott	0	0	0	0	0	0	0	0
Shelby	0	0	0	1	0	0	2	0
Stark	0	0	0	1	0	1	0	0
Stephenson	0	0	1	2	8	15	22	0
Tazewell	0	1	8	15	36	40	46	0
Union	0	0	3	0	2	5	5	1
Vermilion	0	2	5	13	41	53	59	4
Wabash	0	0	0	1	3	0	18	0
Warren	0	0	0	0	1	4	6	1
Washington	0	0	0	0	0	0	1	1
Wayne	0	0	0	0	0	1	0	1
White	0	0	1	10	6	8	8	4
Whiteside	0	0	0	3	4	19	17	0
Will	3	8	14	49	117	180	213	73
Williamson	0	0	1	1	7	10	13	0
Winnebago	1	24	56	127	185	287	284	0
Woodford	0	0	0	0	1	8	11	0
DOC	0	0	0	0	5	19	14	6
Out-of-State	0	2	6	10	24	30	28	4
Total	14	101	308	737	1,659	2,737	3,122	451

Table 34: Average daily population and average length of stay of youth in secure detention, CY05

Source: Juvenile Monitoring Information System

Age 10-16

County	Total Days Detained	ADP	Rank	ALOS	Rank
Adams	7,365	23.1	10	42	1
Alexander	82	0.6	21	7	25
Bond	216	0.6	21	10	22
Boone	1,172	2.7	19	22	11
Brown	33	0.1	22	11	21
Bureau	988	2.9	19	26	7
Calhoun	7	0.0	22	3	29
Carroll	284	0.8	21	21	12
Cass	11	0.1	22	2	30
Champaign	6,328	18.4	11	20	13
Christian	183	0.6	21	7	25
Clark	251	0.7	21	17	16
Clay	56	0.2	22	5	27
Clinton	428	1.1	21	19	14
Coles	712	1.8	20	16	17
Cook	--	442.0	1.0	22.86	10
Crawford	170	0.6	21	4	28
Cumberland	90	0.2	22	10	22
DeKalb	762	2.8	19	6	26
DeWitt	302	0.9	21	16	17
Douglas	151	0.4	22	25	8
DuPage	20,039	48.6	4	37	2
Edgar	186	0.5	21	9	23
Edwards	40	0.1	22	6	26
Effingham	414	1.3	21	18	15
Fayette	301	0.9	21	15	18
Ford	78	0.2	22	19	14
Franklin	477	1.4	21	12	20
Fulton	1,027	3.4	19	42	1
Gallatin	80	0.2	22	26	7
Greene	29	0.1	22	4	28
Grundy	301	0.7	21	8	24
Hamilton	43	0.1	22	21	12
Hancock	406	1.4	21	23	10
Hardin	49	0.1	22	9	23
Henderson	7	0.0	22	7	25
Henry	795	2.3	20	20	13
Iroquois	150	0.5	21	4	28
Jackson	768	2.2	20	19	14
Jasper	59	0.2	22	14	19
Jefferson	1,323	3.9	18	9	23
Jersey	115	0.4	22	5	27
JoDaviess	75	0.2	22	18	15
Johnson	126	0.4	22	10	22
Kane	21,014	55.6	2	24	9
Kankakee	3,582	10.9	14	23	10
Kendall	1,298	3.8	18	19	14
Knox	2,695	7.4	16	28	5
Lake	10,939	33.5	7	20	13
LaSalle	3,452	9.7	15	23	10
Lawrence	32	0.1	22	10	22
Lee	122	0.4	22	5	27

Table 34: Average daily population and average length of stay of youth in secure detention, CY05

County	Total Days Detained	ADP	Rank	ALOS	Rank
Livingston	649	1.9	20	9	23
Logan	692	2.0	20	7	25
McDonough	469	2.1	20	36	3
McHenry	1,500	4.5	17	12	20
McLean	3,084	2.9	19	16	17
Macon	1,500	27.0	9	8	24
Macoupin	1,086	2.1	20	25	8
Madison	9,021	0.2	22	22	11
Marion	698	0.3	22	15	18
Marshall	72	0.8	21	14	19
Mason	81	0.3	22	6	26
Massac	272	0.9	21	19	14
Menard	94	0.3	22	10	22
Mercer	290	0.9	21	13	20
Monroe	117	0.3	22	29	4
Montgomery	250	0.8	21	7	25
Morgan	485	1.5	20	22	11
Moultrie	230	0.8	21	19	14
Ogle	340	0.9	21	8	24
Peoria	13,001	39.9	5	15	18
Perry	238	0.7	21	8	24
Piatt	180	0.5	21	22	11
Pike	120	0.4	22	15	18
Pope	21	0.1	22	4	28
Pulaski	365	1.0	21	15	18
Putnam	141	0.4	22	17	16
Randolph	28	0.1	22	4	28
Richland	248	0.9	21	7	25
Rock Island	3,752	10.1	15	23	10
St. Clair	10,465	30.9	8	17	16
Saline	430	0.3	22	16	17
Sangamon	5,725	16.6	12	15	18
Schuyler	46	0.1	22	15	18
Scott	0	0.0	22	0	31
Shelby	9	0.0	22	9	23
Stark	85	0.2	22	28	5
Stephenson	709	1.8	20	13	20
Tazewell	1,700	5.1	17	11	21
Union	117	0.4	22	6	26
Vermilion	5,241	15.5	13	27	6
Wabash	371	1.1	21	16	17
Warren	314	0.6	21	19	14
Washington	9	0.0	22	4	28
Wayne	49	0.1	22	24	9
White	223	0.6	21	5	27
Whiteside	555	1.6	20	12	20
Will	18,169	55.1	3	25	8
Williamson	966	1.7	20	26	7
Winnebago	14,419	36.8	6	14	19
Woodford	573	1.6	20	28	5
DOC	1,262	1.8		24	
Out-of-State	791	2.4		7	
Total	190,865	970.0		15	